



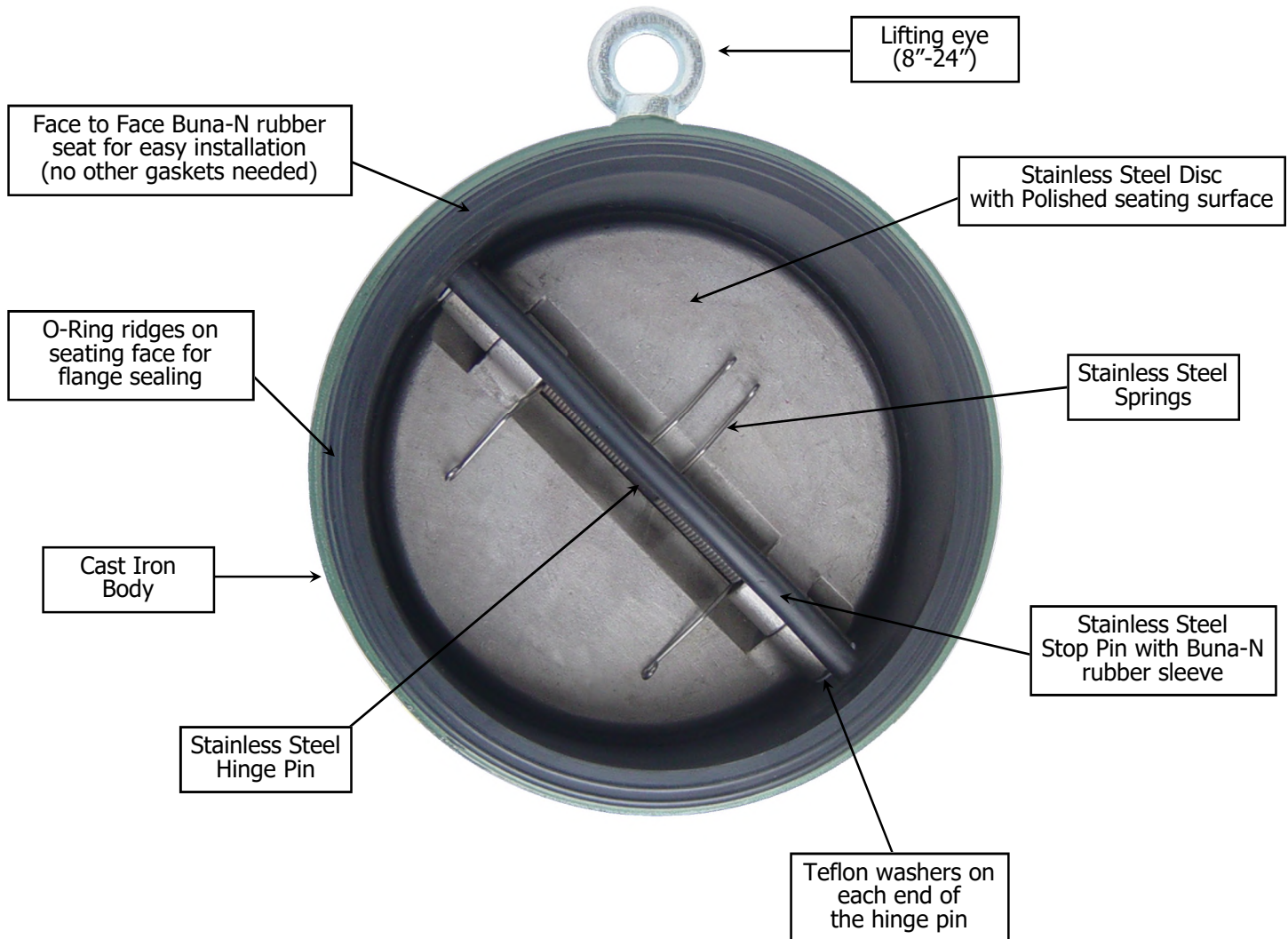
UNIVERSAL SALES

TUF-SKIN VALVES

www.universalsales.biz

92311 Booth Street ~ Junction City, OR 97448 ~ PH 541-998-9999 ~ FX 541-998-9998

TUF-SKIN Check Valves



FEATURES

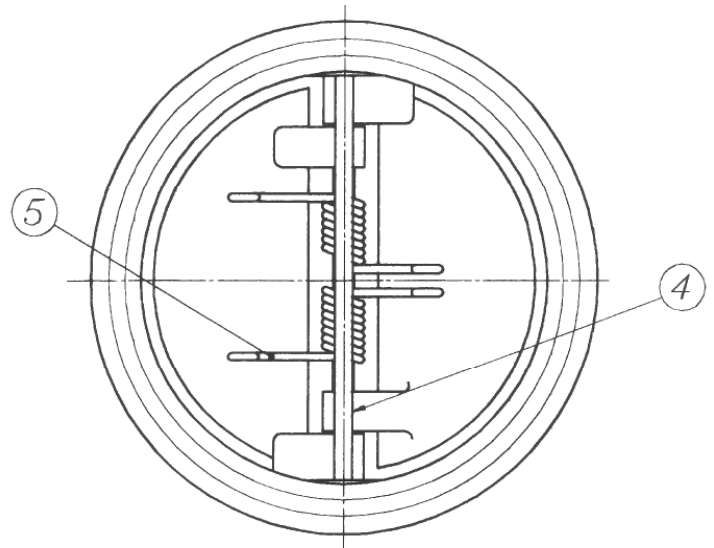
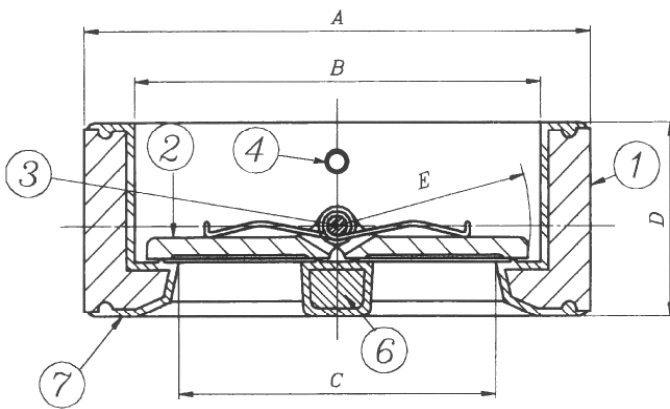
- WAFFER DESIGN:** Shorter face to face dimension, lighter weight, easier installation, and greater strength than swing check valves. 150 PSI rating.
- SPRING CLOSING:** Quick & silent spring action closes plates before pressure reversal takes place, preventing slamming and water hammer. Tempered 316 stainless steel torsion springs are standard.
- STAINLESS PLATES:** Standard on all sizes.
- RESILIENT SEAT:** Buna-N elastomer bonded to valve body has high tensile strength, low compression set, and good resistance to aging. Seat design incorporates integral flange gasket and abrasion protection for stop post.



TUF-SKIN

Check Valve

Dimensions and materials



CHECK VALVE DIMENSIONS					
PART #	A	B	C	D	E
CV-0200	3.78	2.68	1.65	2.13	1.30
CV-0250	4.13	3.03	1.91	2.13	1.42
CV-0300	5.04	3.54	2.56	2.13	1.73
CV-0400	6.46	4.57	3.46	2.52	2.13
CV-0500	7.36	5.15	4.29	2.72	2.60
CV-0600	8.23	6.65	5.39	3.25	3.19
CV-0800	10.55	8.82	7.40	3.78	4.21
CV-1000	12.91	10.94	9.41	4.37	5.24
CV-1200	15.28	12.76	10.87	5.28	6.18
CV-1400	16.54	14.13	12.20	6.06	6.81
CV-1600	19.69	16.54	14.13	6.54	8.03
CV-1800	21.20	18.20	16.00	7.37	8.12
CV-2000	23.44	20.17	18.00	8.61	9.53
CV-2400	27.19	24.19	22.00	8.61	11.62

CHECK VALVE PARTS			
ITEM #	DESCRIPTION	MATERIAL	PART #
1	Body	EPOXY COATED IRON	CV-XXXX-BDY
2	Plate (set of 2)	STAINLESS STEEL	CV-XXXX-PLT
3	Hinge Pin	STAINLESS STEEL	CV-XXXX-HPN
4	Stop Pin	STAINLESS STEEL	CV-XXXX-SPN
	Rubber Sleeve	BUNA-N	CV-XXXX-RUB
5	Spring (set)	STAINLESS STEEL	CV-XXXX-SP
6	Stop Post (on body)	BUNA-N COATED IRON	(on body)
7	Seat (on body)	BUNA-N	(on body)
-	Washers on Hinge Pin	TEFLON	CV-XXXX-WSH
-	Pin Retainer Screws	STEEL	CV-XXXX-RTR
For part numbers, replace the XXXX with the CV model number.			
Example: CV-0600-PLT = set of plates for CV-0600			